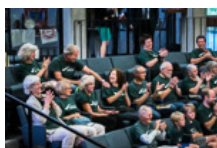


Santa Rosa Southeast Greenway



 [Like us on Facebook](#)

July 2020 eNews

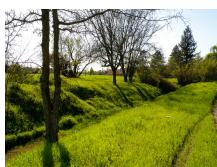
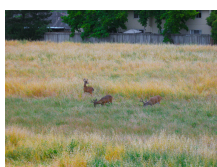


Getting outside for a walk or hike is more important than ever during the Covid-19 pandemic. Fortunately, we have many beautiful places to enjoy here in Sonoma County.

In this issue, campaign committee member and avid hiker Jim McAdler shares one of his favorite hikes in Trione-Annadel State Park - a loop on the Cobblestone and Orchard Trails.

If you have a favorite hike that you would like to share, please send a brief description and photo to us at

info@southeastgreenway.org



Greenway Acquisition Moves Ahead

Good news! On July 7th, the Santa Rosa City Council approved a five-year extension of the Memorandum of Understanding (MOU) between the California Department of Transportation (Caltrans) and the Southeast Greenway Community Partners. This MOU was first signed on July 7, 2015, establishing an agreement to work together toward the transfer of the undeveloped State Route 12 land to local agencies for the Southeast Greenway Project. During the first five-year term of the MOU, the City approved a General Plan Amendment, rezoning and Environmental Impact Report for the project.

Since those planning approvals in July 2019, the Community Partners have worked hard on everything else needed for negotiating a purchase agreement with Caltrans. The City's Real Estate Division has taken the lead in working with Caltrans on the MOU extension and clarifying procedures for appraisals and acquisition. Sonoma Water Agency staff has completed reviewing the deeds and mapping the 40-plus parcels. Now Sonoma Land Trust has hired a local title company to prepare legal descriptions and preliminary title reports. When this information is complete, the Partners will be poised to arrange the required property appraisals. Negotiations with Caltrans for acquisition will follow.

We want to thank the project leaders at Caltrans and all of the Greenway Partners for their hard work in moving this process forward. And we want to thank all of the Southeast Greenway donors - your contributions and support make this progress possible!

Eyes on the Greenway

Before our community acquires the Southeast Greenway and develops trails, community gardens, and park facilities, we must continue to watch and protect the land. We want to give a big shout-out to all of the neighbors who have been proactive in reporting noise, illegal camping, refuse and fire danger.

As we move closer to acquiring the property, we all need to become stewards of the Greenway. We can do that by keeping our eyes on the Greenway and taking action when needed. In case of emergency such as a medical emergency or fire, please call 911 and inform them that the Greenway is still state property. If the situation you observe is not an emergency but requires attention, please call the CHP at 707-588-1400. They will take appropriate action and contact Caltrans, the agency that is responsible for management of the property. Thank you from all of us at the Greenway Campaign.

Hiking in Trione-Annadel State Park

Trione-Annadel State Park is vast, almost 5,100 acres in size, but right in our backyard. There are many great hikes in the Park through oak woodlands, stands of Douglas fir, boundless meadows, and wildlife habitat. One such hike is a 4.6-mile loop on the Cobblestone and Orchard Trails.

Cobblestone Trail begins at the free parking lot on Channel Drive. The trail is also accessible from Spring Lake Park, either by the trail at the end of Violetti Road or by the unmarked Frog Pond Trail.

The first leg of the hiking loop is a steep climb. After reaching Frog Pond Meadow, the rise up Cobblestone becomes easier, just as beautiful views open up of Adobe Rock, Hood Mountain and Sonoma Valley. As Cobblestone meanders south, the Santa Rosa Plain comes into full view, with Taylor Mountain in the distance.

Cobblestone ends at Rough Go Trail, where the route turns left and ascends Rough Go to the Orchard Trail junction, about .2 mile.

Orchard Trail wanders along the east side of the mountain ridge with spectacular views of False Lake Meadow. Here, traffic noise is non-existent, and the sounds of nature abound. Orchard Trail loops back to Cobblestone Trail, and the descent begins back to the trailhead. What goes up must come down, but the physical effort of this hiking loop is worth it. Enjoy!

Sonoma Land Trust, a 501(c)3 public charity, is the fiscal sponsor of the Southeast Greenway Campaign. Contributions to the Southeast Greenway Campaign are fully tax-deductible to the extent allowed by law.

[Friend on Facebook](#)

Santa Rosa Southeast Greenway Campaign
P.O. Box 9122, Santa Rosa, CA 95405
Email: Info@southeastgreenway.org

Visit the Santa Rosa Southeast Greenway Campaign online at
www.southeastgreenway.org