

Santa Rosa Southeast Greenway



Like us on Facebook

Forward to a Friend

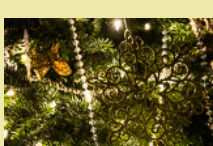
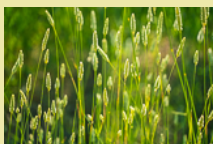
DONATE NOW

December 2018 eNews



Holiday Greetings!

The Southeast Greenway Campaign Committee sends you our best wishes for a joyous holiday season and happy New Year!



Good News for SE Greenway Supporters

As this year comes to a close, we feel a deep sense of gratitude for the generosity and hard work that so many have contributed to rebuild our community and restore our spirits after last year's wildfires. The recovery effort has caused an understandable delay for the Southeast Greenway. **We are happy to report that the project is back on track as we move into 2019.**

Building a Strong Foundation

In 2018 the Campaign and our Greenway Partners have worked diligently to build a strong foundation for our parks, open spaces and the future Greenway. Highlights include:

- **The Greenway Campaign** advocated to keep the Greenway as a priority in city goal planning and provided in-depth feedback for the Bicycle and Pedestrian Master Plan Update.
- **Sonoma Land Trust** was awarded a \$35,000 grant from the Giles W. and Elise G. Mead Foundation toward purchase of the Santa Rosa Southeast Greenway. This represents another successful step in raising funds to meet the Ag + Open Space District's \$1M matching grant.
- **City of Santa Rosa's Planning Division** worked to prepare a draft update for the traffic portion of the SE Greenway Environmental Impact Report (EIR). They are now ready to proceed with the review, public comment and approval process. The **Recreation and Parks Department** focused on fire recovery projects for 10 damaged parks and open spaces.
- **Sonoma County Regional Parks** opened Tolay Lake Regional Park, restored 2600 acres of county parkland that burned, and worked hard to pass Measure M to stabilize funding for both county and city parks.
- **Sonoma County Water Agency** (now Sonoma Water) worked to protect our watersheds and water supply from adverse wildfire impacts and is leading the Lake Sonoma Fire Camera Pilot Project to protect this key water source.

Moving Forward in 2019

We anticipate meeting significant milestones for the future Southeast Greenway:

- Completion and approval of the Environmental Impact Report, General Plan Amendment and Rezoning Plan. This process will require review by City departments, a public comment period, public hearings and approval by the City's Planning Commission and City Council.
- Sponsoring a public event and celebration to present the adopted plan and next steps.
- Working with Caltrans to appraise the property and begin negotiations for acquisition.
- Fulfilling the Greenway Campaign's commitment to raise \$150,000 toward the Open Space District's matching grant.

You Can Help

In 2019 the Campaign will be calling on all of our supporters to help meet these important Greenway milestones. We will be asking you to provide public comment, show support at Planning Commission and City Council Meetings, participate in our public event, and give generously to the Greenway Acquisition and Development Fund Drive.

Please Donate!

We hope you will share our enthusiasm and make a year-end donation to the SE Greenway Acquisition Fund. You will find clear directions on how to make a secure donation online or by check at

www.SoutheastGreenway.org/donate.

Our Appreciation

During this season of gratitude and giving, we want to say how much we appreciate your ongoing support of the Southeast Greenway and all of your efforts to make our community such a special place to live.

Sonoma Land Trust, a 501(c)3 public charity, is the fiscal sponsor of the Southeast Greenway Campaign. Contributions to the Southeast Greenway Campaign are fully tax-deductible to the extent allowed by law.

Friend on Facebook | Forward to a friend

Visit the Santa Rosa Southeast Greenway Campaign online at www.southeastgreenway.org