

Santa Rosa Southeast Greenway



Like us on Facebook

Forward to a Friend

March 2018 eNews



Highway 101 Pedestrian & Bicycle Bridge

You're invited to a public meeting discussing the proposed Highway 101 Bicycle and Pedestrian Bridge. The bridge would close a gap in east-west bicycle and pedestrian travel caused by Highway 101 in the Santa Rosa Junior College area. The City of Santa Rosa, Caltrans, and the bridge design team invite your input on project goals, the crossing's location, and design priorities to guide them in the preliminary engineering and environmental analysis phase. A sign language interpreter and Spanish language translator will be present. More info [click here](#).

Thursday, March 29, 2018
6:00 to 8:00 pm
Santa Rosa High School
Multi-Purpose Room
1235 Mendocino Ave, Santa Rosa



Tree-planting photos by Dale Godfrey

Arbor Day Tree Planting at Spring Lake

On March 7, fifteen friends of the Santa Rosa Southeast Greenway planted a coast live oak tree in Spring Lake Park to celebrate Arbor Day, which is also Luther Burbank's birthday. June Moes was honored for her contribution to the park through a determined community effort that took place almost 30 years ago to defeat plans for a bridge over Spring Lake. A

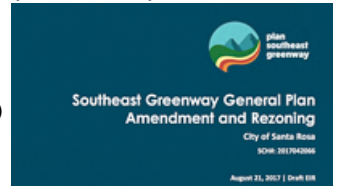


beautiful morning at Spring Lake, community spirit and assistance from Sonoma County Regional Parks staff made the tree planting a wonderful reminder of our community's persistent efforts to have and enjoy beautiful parks and open spaces in our county. Go see Spring Lake's new oak tree at the park bench commemorating the Spring Lake Park Preservation Committee! It's located at the northwest corner of the swimming lagoon parking lot.



Greenway Update

At a recent meeting of the Southeast Greenway Partners, City of Santa Rosa staff announced that the General Plan Amendment process has been delayed by the fire response and recovery. Currently, the City's Environmental Impact Report (EIR) consultant is conducting an additional analysis of traffic alternatives and impacts. Planning Commission hearings on the project may take place in late fall of this year, and City Council approval of the EIR and General Plan Amendment could occur in early 2019.



Sonoma County Vital Lands Initiative

The Vital Lands Initiative is a comprehensive, long-term strategic plan for the Sonoma County Agricultural Preservation and Open Space District that will outline strategies for protecting our vital open space lands to preserve agriculture, natural resources, recreation, scenic vistas, greenbelt areas, and urban open space. It has been developed using the best available science and data, and relies upon substantial input from the community.



The first draft is now available for [download](#) and comment, and a series of public meetings are scheduled:

- Wed Mar 28, 6 – 8 pm: Healdsburg Villa Chanticleer
- Thurs Mar 29, 6 – 8 pm: Santa Rosa Veterans Memorial Building
- Sat Mar 31, 10 am – 12 pm: Cloverdale Veterans Memorial Building

Sonoma Land Trust, a 501(c)3 public charity, is the fiscal sponsor of the Southeast Greenway Campaign. Contributions to the Southeast Greenway Campaign are fully tax-deductible to the extent allowed by law.

[Friend on Facebook](#) | [Forward to a friend](#)